

Description

Conduit Repair Systems, Inc.'s ("CRS") split couplings are a high-grade, rigid split conduit fitting produced from virgin polyvinyl chloride (PVC). Designed for commercial, industrial, and utility applications, CRS's PVC split couplings are proven to provide durable and effective performance in underground, encased, and above ground exposed applications. The couplings are an easy-to-use, self-locking two-piece coupling that eliminates the need to cut and splice cables when connecting or repairing conduit. The couplings are used to either connect sections of split conduit together or to connect split conduit to standard conduit.

CRS's split couplings are designed for many cable and conduit applications including:

- Electric Utilities
- Cable, data, and communication lines
- Industrial and commercial buildings
- Street and Highway underground feeds
- Transportation Systems – airports, bridges, subways, and tunnels
- Repairing damaged conduit
- Enclosing cable on telephone poles
- Enclosing direct buried cable
- OEM applications
- Residential electrical applications

Material

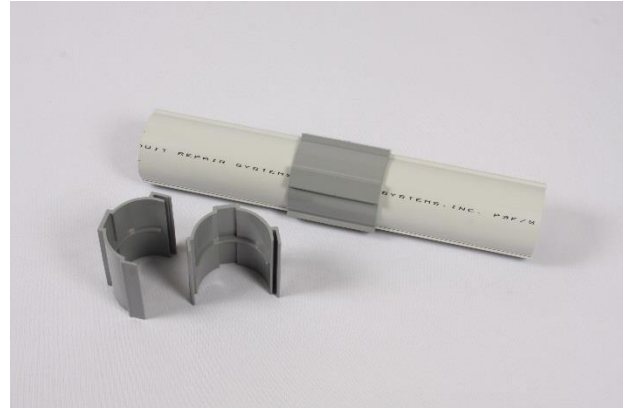
CRS's split couplings are produced with the following material:

YL-700

UL Approved Material (UL File #: E464586)

YL-700 is a special purpose, rigid PVC profile extraction compound, which is designed for profile injection molding and applications requiring the following properties:

- Weatherability
- Impact Strength
- Durability
- Dimensional Stability
- Flame Retardant
- Chemical Resistant



Codes and Standards Compliance

CRS's split couplings have been independently tested by Intertek and certified to UL 651* and are approved for use in electrical applications in accordance with the National Electrical Code. The listed products are identified with the ETL Listed Mark. Additionally, the split conduit is manufactured in accordance with NEMA TC-2.



Intertek

Please visit www.intertek.com for detailed ETL Listing information.

*The ETL Listing does not apply to CRS's 1" schedule 40 and 4" c-duct split couplings.

Important Information

Use of CRS's split conduit products should be done in accordance with the product's installation instructions. All safety guidelines in the National Electrical Code related to the installation of schedule 40 and schedule 80 conduit shall be strictly followed.

We believe the information contained in this specifications sheet to be reliable and accurate to the best of our knowledge, but we cannot warranty for process and applications beyond our control.